

CHINA BUILDING MATERIAL MAGAZINE

中国建材通讯



中国建材： 为

腾

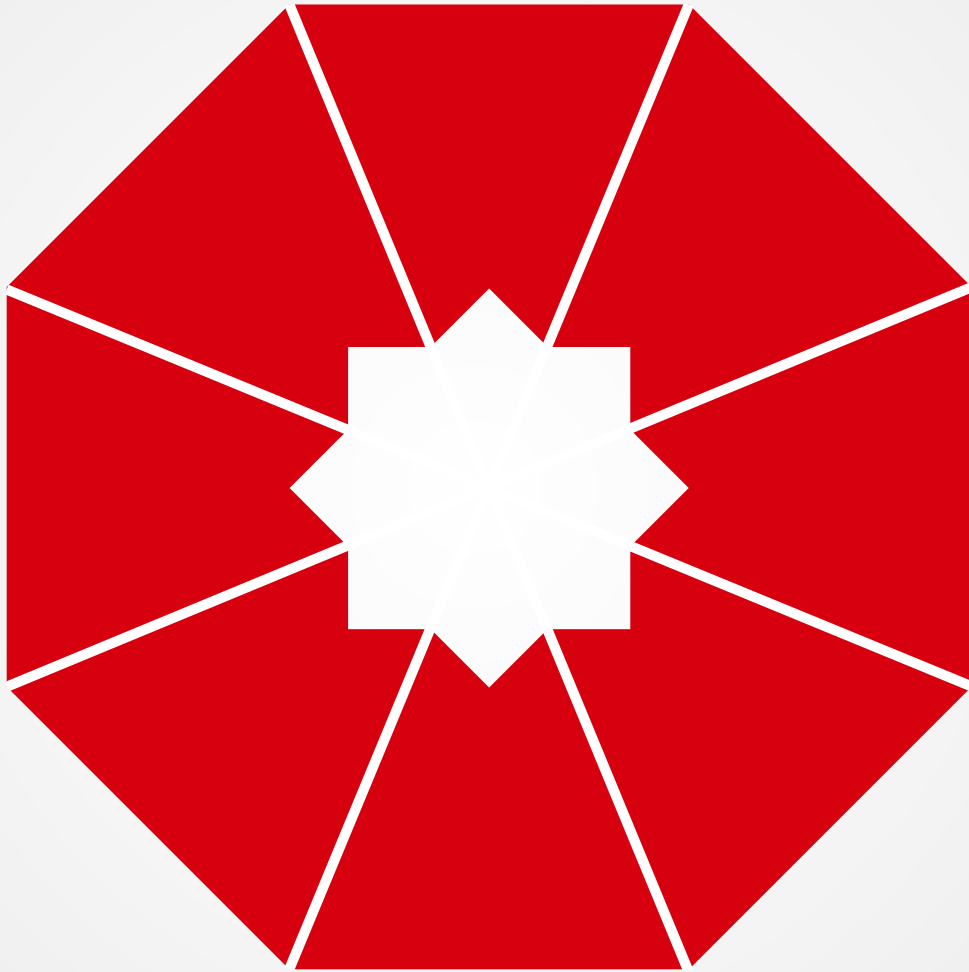
中国建材集团与法孚集团签署合作协议

坚定信心再出发 做好供给侧结构性改革这场硬仗

中国建材集团年产2.4亿平方米锂电池隔膜生产线



中国建材集团有限公司
China National Building Material Group Co.,Ltd.





S" #+

&* " "

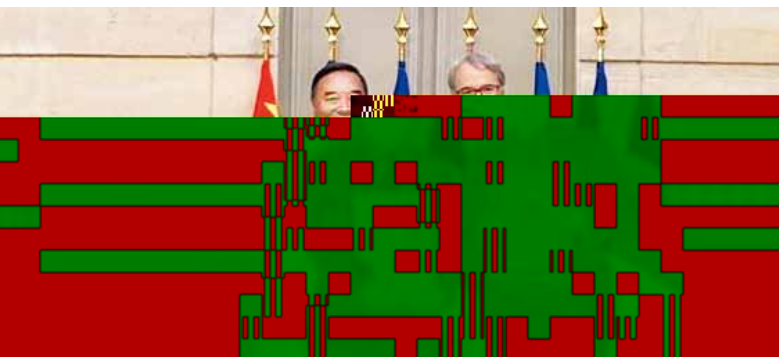
S" #*

S" #*

S&S

Contents

2019 3 138



1

4

5

6

7

8

9

10

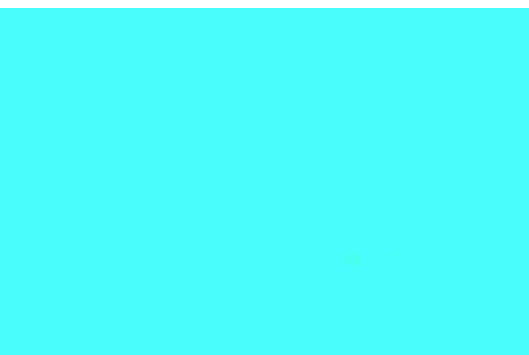
11

2019

2018

4800

12



20

40 1958 2018

23

46

9

30

48

2.4

34

38



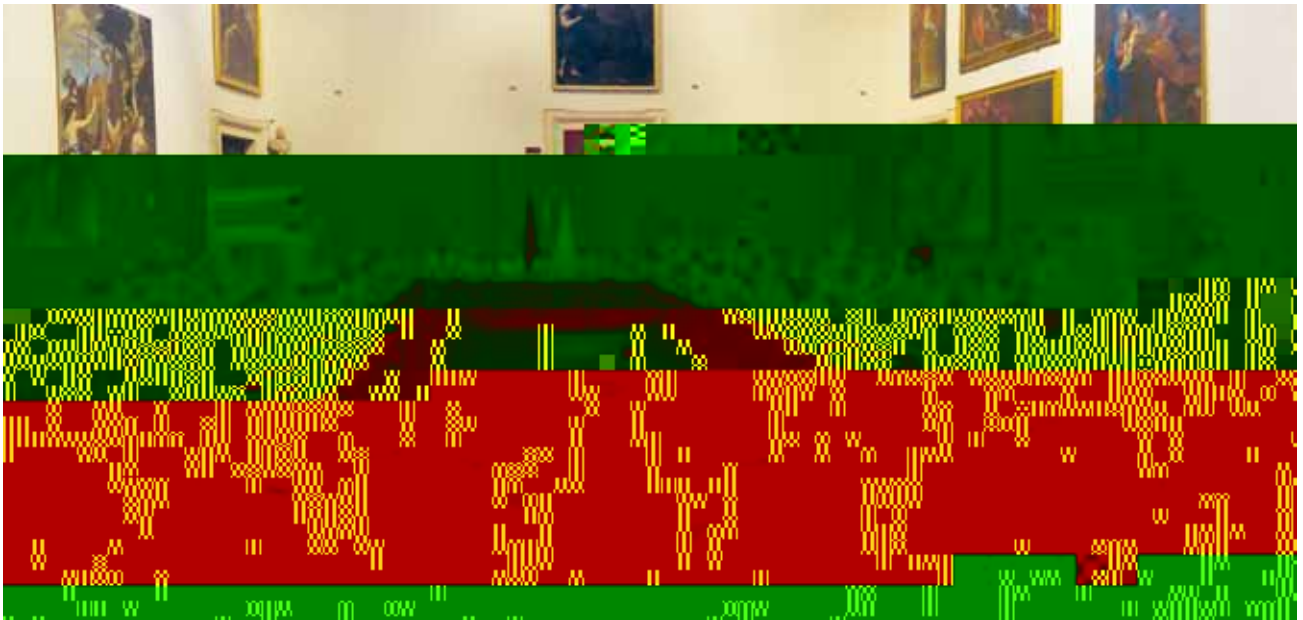
55

Romain Soubeyran

“ ”

EPC





” EPC 70% 400 “
“ ”



38

72

10

“ ”



“

”

“

”

CO₂

”

IFC

MGA

“

”

“

”

VCA

38

72

10

“

”

2018

IFC

IFC

VCA

VCA

2018

41

“

”

CO₂25

CO₂



2018





“ ” “ ”

“ ”

2019

“ 335 ” “ ”

5



2018

“ ” 2018

807 2190 63.3% 18.9% 203.6 44.9%

HK3323 2018 18.4 68.8% 3.8 2018

485 92.1% 2018

203.6 44.9%

2018

807

63.3%

“ ” 2018

2019

“ ”

GDP 6% 6.5%

2018

“ ” 2018

2190 18.9% 203.6

44.9% 80.7

63.3% 3.7 95.99

3528 18.7

8040MW 218 341

2018

2018

2019

“

”

“

”

“

”

“ + ”

“ ”

2018

100

2018

130.6%



“

”

“

”



4800

AGM

AGM

4800

“ ”

13

“ ”

“ ”

“ ”





3 5

6.5%

6% -

16% 13%

8000 1.8

400 5776

2





4.0

115
30

64

3

2009

10

2015



+ +

32.5

+ +

50

90

45

0.5

20

10

30

20

65%

312

2018

+

66%

26

3.8

10

1

7.7kg/t 8.27kWh/t 4.54kWh/t

2018

2660

884

EPC+ + +



.....

90%

21

50

60

2007

T300

2017

9

SYT55 T800



2018 2

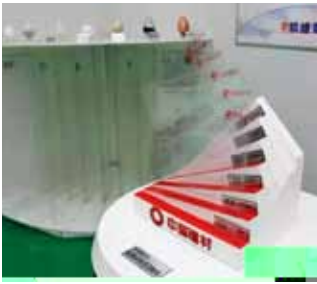
T1000

.....



.....





		2015	3	28	0.2
		2016	4		0.15
2018	4	0.12			0.1

0.5



Avancis Avancis

100

4.0



2015 10

Avancis

30%

100

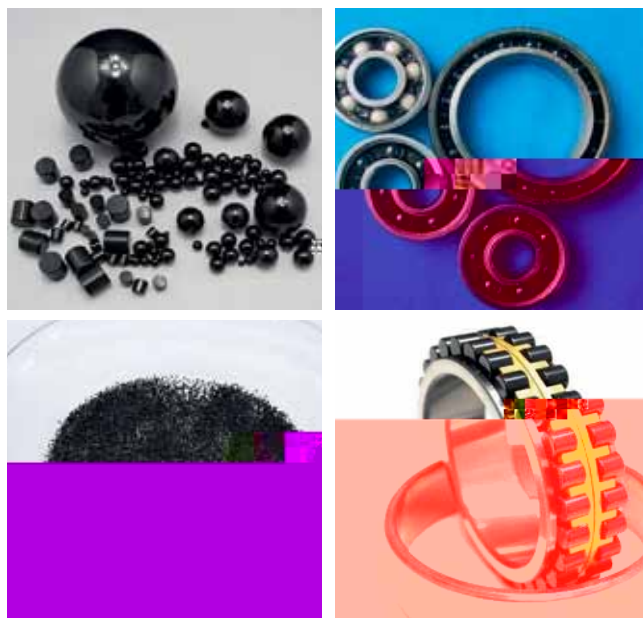
3 5

20GW

15GW

5GW









2007 10 30%

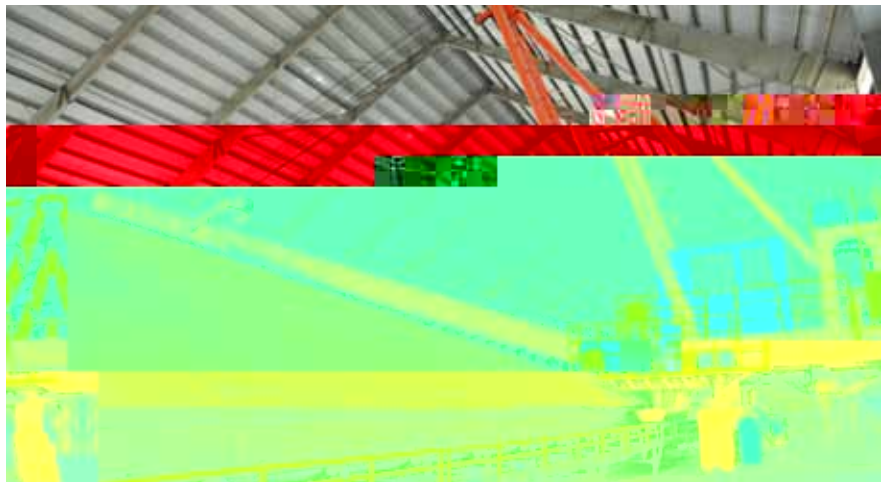
2013

5000t/d
9MW

2007

2012

180



2004 5000t/d

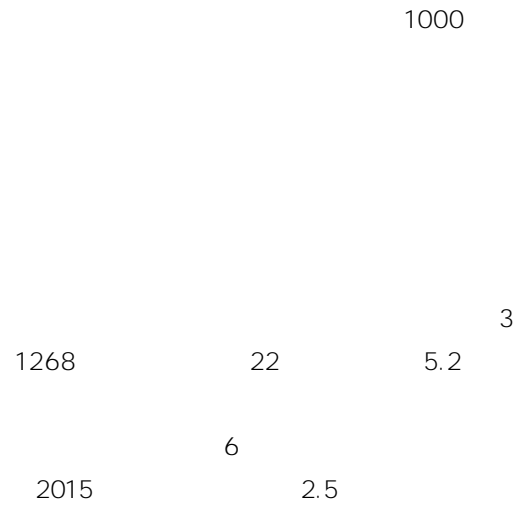
6

2010 9

70%

PDCA

KPI



GB4915- 2013



ISO 9001



2012
13



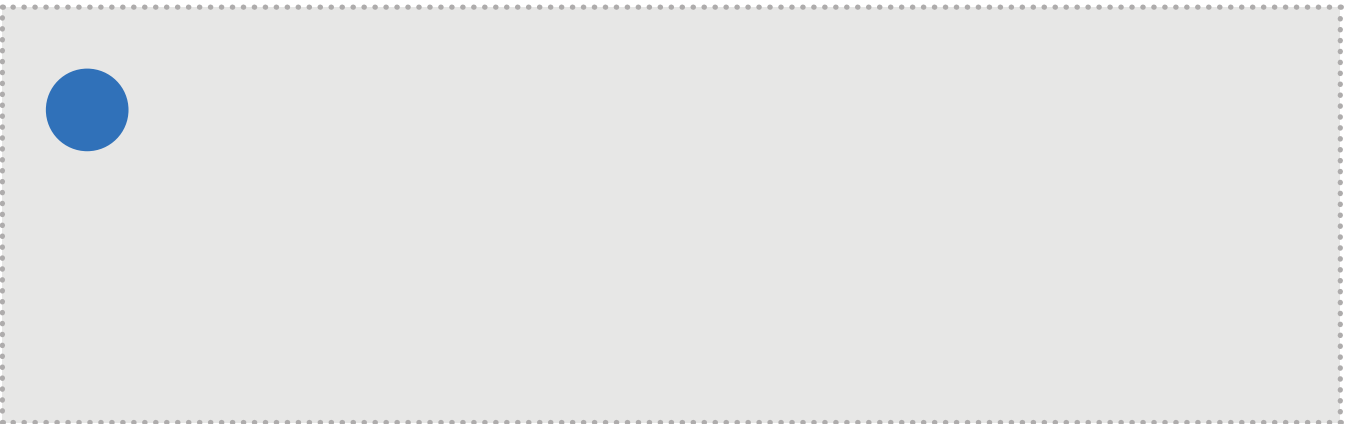
2016

2014



60

2007





BAYAH 10000

LEBAK BAYAH GAMA
PT. Cemindo Gemilang

4.268

32

EPC

BAYAH 10000

E P

BAYAH 10000

10 9 20



58

BAYAH 10000

100%

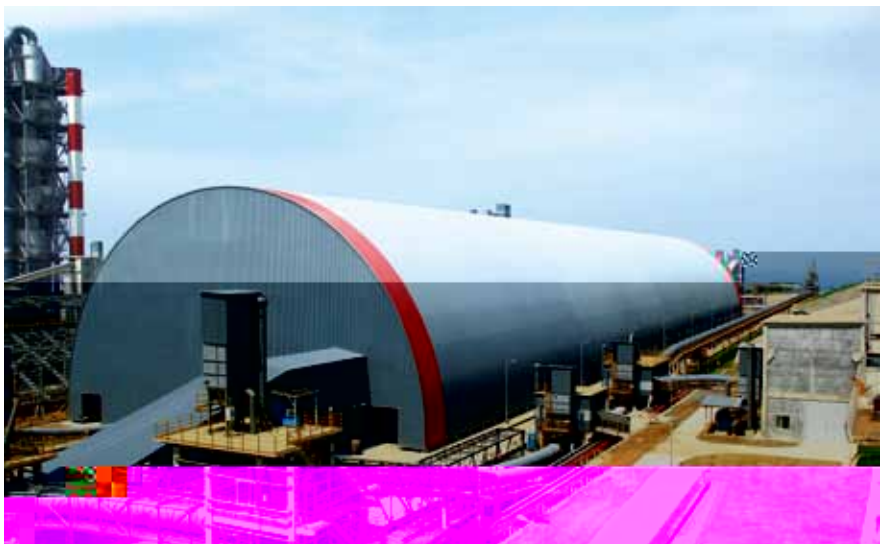
100% 95%

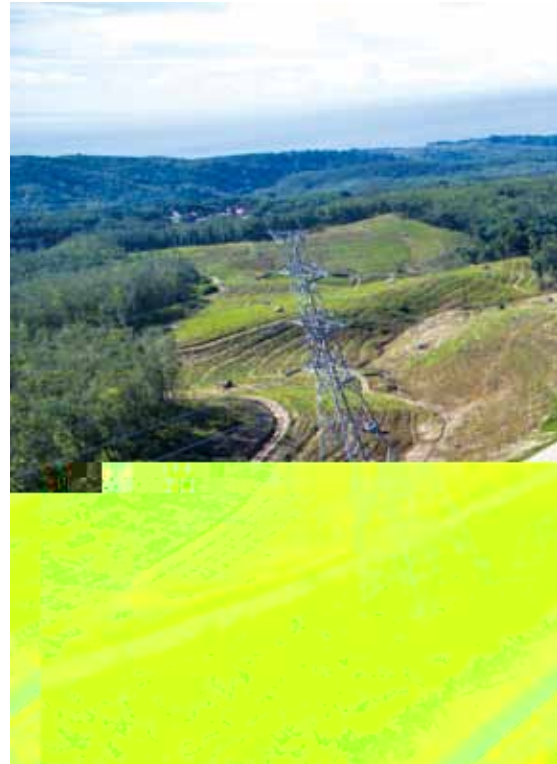
2
2017 6

2018 10

11000

95%





GAMA

1000

5

4000

6 - 10

5

10 /

11

15

49

54

8

36

54

23

1/4

7.38

7

6

53

346

35.7

5.5

1400

475

108



20% 9% 15%

GAMA

60 Gresik 100

Ciwandan 100

BAYAH



2014 2016

2016
7

15
50

2018
2017
2015

2015-

2012

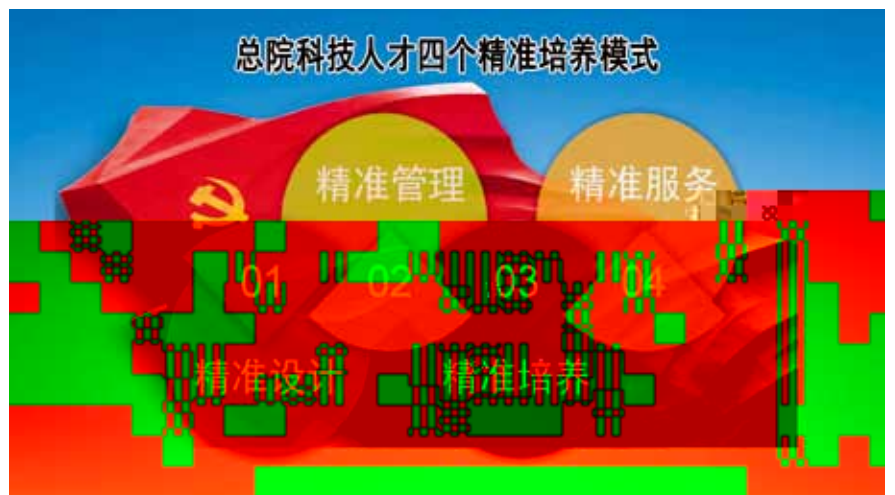
1.

2.

3.



4.





4

863

973

10

535

180

50

22

30

2018

2

© 3

3 G ¾

D



a

S %

3

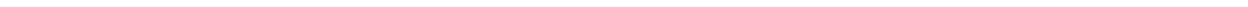
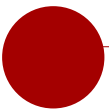


2

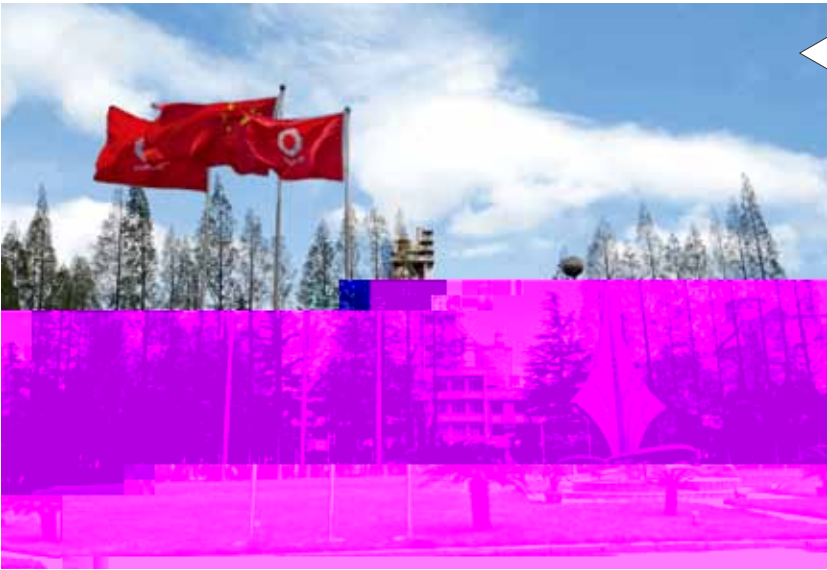
+ + +N

1

;



1958 — 2018



&"



%\$ S" "

#! * \$" # ("



渭平镇陈地油榨油坊在次河家屋



汉中永记厂全体同志义务劳动修水利通凤穿井始井大会 1958年4月

1958年义务井



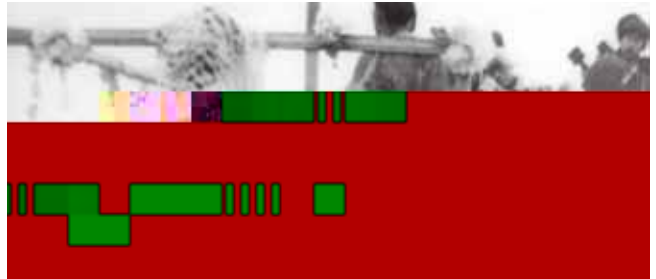
60年代厂区一角



用马车、手车运料



%





#+&) #*

#+))

" " S2%

#+)*

#+*#

S&



&SZ D

#L*#

#+* \$

#++# (" " "

#++'



%z

S' " "

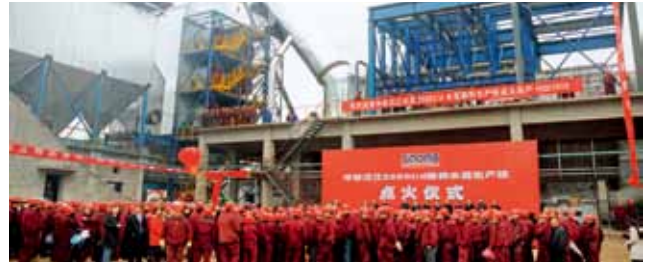
#' " "

#

%

#' ' *





S''
S''



48

04

06

2019

07

5.0

08

2019

2018

2019

05

09

L Amali

5800

EPC

